

# SOMERSET

## 3405BN

### MEDIUM PENDANT

Chic and elegant, the Somerset collection exudes a quiet and precise sophistication. Subtly fusing modernity with vintage appeal, its etched opal glass deftly floats inside a streamlined metal yoke and ring while understated turned metal knobs add an authentic edge.

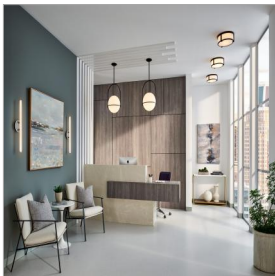
DETAILS	
FINISH:	Brushed Nickel
MATERIAL:	Steel
GLASS:	Etched Opal
SLOPE DEGREE:	90
DIMMABLE:	YES - WITH DIMMABLE LAMP (NOT INCLUDED)

DIMENSIONS	
WIDTH:	15.5"
HEIGHT:	23"
WEIGHT:	7lb

LIGHT SOURCE	
LIGHT SOURCE:	Socketed
WATTAGE:	1-10w Med. LED, 100w Equiv.
VOLTAGE:	120v

MOUNTING	
CANOPY:	6" Dia.
LEAD WIRE:	1 X 120"
MAX HEIGHT:	55.8

SHIPPING	
CARTON LENGTH:	16
CARTON WIDTH:	16
CARTON HEIGHT:	24
CARTON WEIGHT:	10.8



#### PRODUCT DETAILS:

- Suitable for use in dry (indoor) locations as defined by NEC and CEC. Meets United States UL Underwriters Laboratories & CSA Canadian Standards Association Product Safety Standards.
- This fixture includes multiple down stems in various lengths to customize the installation height of the fixture, including one 6" stem and two 12" stems
- This item may be hung on a sloped ceiling
- Merging the best of traditional and modern elements with a sophisticated and streamlined look

# HINKLEY

HINKLEY  
33000 Pin Oak Parkway  
Avon Lake, OH 44012

PHONE: (440) 653-5500  
Toll Free: 1 (800) 446-5539

[hinkley.com](http://hinkley.com)