

# LEX

## 2715BZ

### LARGE WALL MOUNT LANTERN

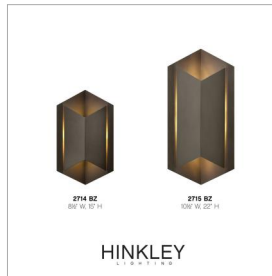
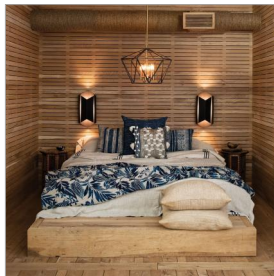
Lex is a lantern formed out of geometric shapes that embodies modern design. Architectural in look and feel, Lex offers a striking silhouette in durable aluminum combined with LED technology for a bold contemporary statement.

DETAILS	
FINISH:	Bronze
MATERIAL:	Aluminum
DIMMABLE:	YES, CL TYPE DIMMER (SSL7A)

DIMENSIONS	
WIDTH:	10.5"
HEIGHT:	22"
WEIGHT:	5lb
BACK PLATE:	4.5"W X 6.75"H
EXTENSION:	5.5"
TOP TO OUTLET:	11.000000"

LIGHT SOURCE	
LIGHT SOURCE:	Integrated LED
WATTAGE:	12w LED *Included
VOLTAGE:	120v

SHIPPING	
CARTON LENGTH:	25
CARTON WIDTH:	13.5
CARTON HEIGHT:	9
CARTON WEIGHT:	7



#### PRODUCT DETAILS:

- LED components carry a 5-year limited warranty
- Suitable for use in wet (outdoor direct rain) locations as defined by NEC and CEC. Meets United States UL Underwriters Laboratories & CSA Canadian Standards Association Product Safety Standards
- 2-year finish warranty
- Exclusively available in High Performance LED
- Bold lines and a clean, minimalist style complement contemporary architecture

# HINKLEY

HINKLEY  
33000 Pin Oak Parkway  
Avon Lake, OH 44012

PHONE: (440) 653-5500  
Toll Free: 1 (800) 446-5539

[hinkley.com](http://hinkley.com)